

PRODUCT NO.
92788

REVISIONS				
REV	DESCRIPTION	ECN	BY	DATE
A	RELEASED	J30023	N.T	6/18/93
B	REVISED	J30087	N.T	6/18/93
C	REVISED	J50086	M.X	6/2/95

PRODUCT NO. *92788-XXX	STAND OFF DIM "M"(mm)	UPPER DECK			LOWER DECK			LOCATOR 92175-XXX	DIM "P" (mm)	DIM "Q" (mm)	HDR COLOR	SHEET NO.	MOUNTING STYLE TO PCB & DIRECTION OF RINK ARM
		(MECH+HDR) 92792-XXX	(MECH) 92768-XXX	(HDR) 92140-XXX	(MECH+HDR) 92767-XXX	(MECH) 92768-XXX	(HDR) 92140-XXX						
000	0	000	001	005	100	101	000	001	2.8	8.6	BLACK	NO.2	
020	2	020	001	045	120	121	040	001	2.5	10.3			
100	0	100	101	005	000	001	000	001	2.8	8.6	BLACK	NO.3	
120	2	120	101	045	020	021	040	001	2.5	10.3			
200	0	000	001	005	000	001	000	001	2.8	8.6	BLACK	NO.4	
220	2	020	001	045	020	021	040	001	2.5	10.3			
300	0	100	101	005	100	101	000	001	2.8	8.6	BLACK	NO.5	
320	2	120	101	045	120	121	040	001	2.5	10.3			
500	0	600	001	505	500	101	500	001	2.8	8.6	NATURAL	NO.6	
520	2	620	001	545	520	121	540	001	2.5	10.3			
600	0	500	101	505	600	001	500	001	2.8	8.6	NATURAL	NO.7	
620	2	520	101	545	620	021	540	001	2.5	10.3			
700	0	500	101	505	500	101	500	001	2.8	8.6	NATURAL	NO.8	
720	2	520	101	545	520	121	540	001	2.5	10.3			
800	0	600	001	505	600	001	500	001	2.8	8.6	NATURAL	NO.9	
820	2	620	001	545	620	021	540	001	2.5	10.3			

* 92788-X X X

HDR SOLDER TAIL 0 : R/A

STAND OFF HEIGHT (DIM "M") 0 : 0mm(NONE)
 2 : 2mm

MOUNT STYLE TO PCB & DIRECTION OF PUSH ROD

0 : TOP MOUNT & RIGHT-LEFT LINK ARM
1 : TOP MOUNT & LEFT-RIGHT LINK ARM
2 : TOP MOUNT & RIGHT-RIGHT LINK ARM
3 : TOP MOUNT & LEFT-LEFT LINK ARM
5 : BOTTOM MOUNT & RIGHT-LEFT LINK ARM
6 : BOTTOM MOUNT & LEFT-RIGHT LINK ARM
7 : BOTTOM MOUNT & RIGHT-RIGHT LINK ARM
8 : BOTTOM MOUNT & LEFT-LEFT LINK ARM

SHEET INDEX	ISSUE									DATE	CUSTOMER COPY
	C	C	9	B	B	B	B	B	B		
SH. NO.	1	2	3	4	5	6	7	8	9		
TOLERANCES UNLESS OTHERWISE SPECIFIED		MAT	DR			ENGR			DATE	CUSTOMER COPY	
LINEAR		FINISH	CHK			APPR			DATE	UNIT	

J. Omada 6/17/95
M. Kojima 6/17/95
R. Oguchi 9/11/95

BERG ELECTRONICS

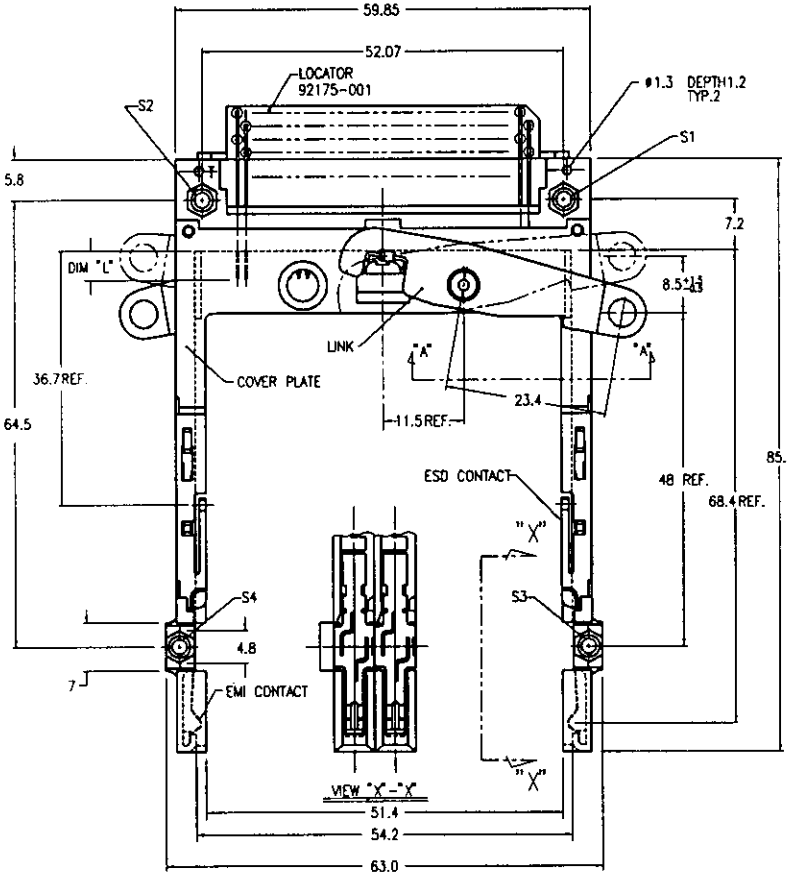
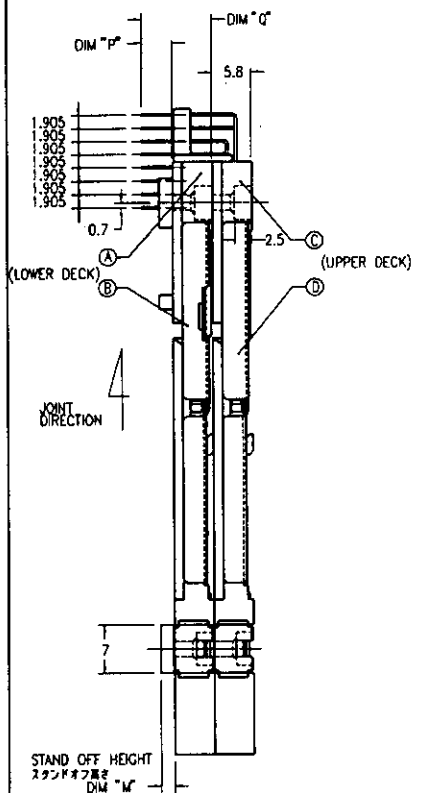
TITLE: 68P DOUBLE EJECTOR TYPE 1/1/1
NON-PUSH ROD

SCALE: 1/1 C DWG. NO: 92788 REV: C SHEET: 1 of 9

DO NOT SCALE PRINT THIS INFORMATION IS CONFIDENTIAL AND IS DISCLOSED TO YOU BY CONDITION THAT NO FURTHER DISCLOSURE IS MADE BY YOU TO OTHER THAN BERG PERSONNEL WITHOUT WRITTEN AUTHORIZATION FROM BERG ELECTRONICS JAPAN LTD

PRODUCT NO.
92788-000
92788-020

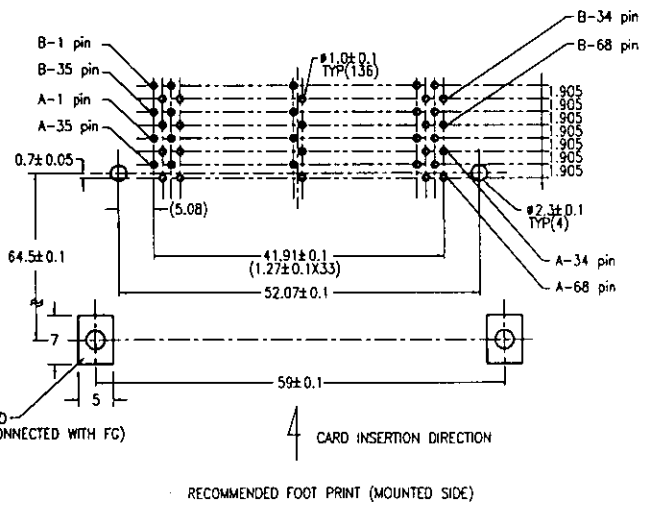
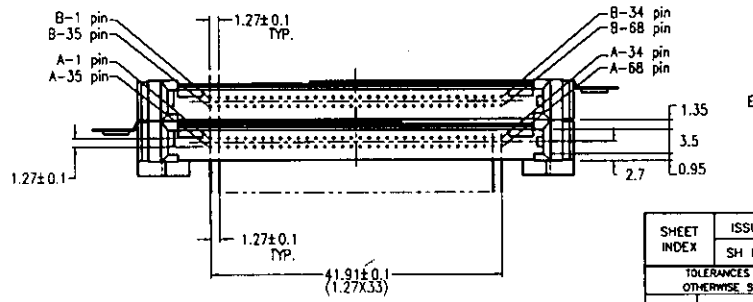
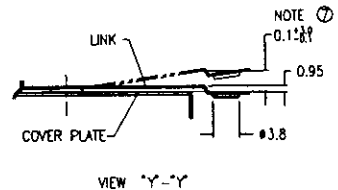
REVISIONS				
REV	DESCRIPTION	ECN	BY	DATE
A	RELEASED	J30044	N.T.	1/14/93
B	REVISED	J30087	N.T.	3/19/93
C	REVISED	J50086	M.K.	6/2/95



NOTE

- EJECT FORCE 3.5kg MAX.
- ASSY PROCESS
 - TO MOUNT PART ②, ③ ON PWB WITH SCREW (S1,S2) AND SOLDER.
 - TO JOINT PART ④, ⑤ INTO PART ⑥, ⑦ THEN FIX PART ⑧, ⑨ WITH 2 SCREWS (S3,S4).
- EJECT TRAVEL 8.0mm
- MATERIAL
 - PART ②, ③ (HEADER ASSY)
 - HOUSING : LCP UL94V-0 BLACK
 - LOCATOR : G.F. 6.6 NYLON UL94V-0 BLACK
 - PIN : PHOSPHOR BRONZE
 - PART ④, ⑤ (EJECT MECHANISM ASSY)
 - GUIDE : POLYPHTHAMID UL94V-0 BLACK
 - PLATE : STAINLESS
 - EMI CONTACT : PHOSPHOR BRONZE
- FINISH (PIN)
 - UNDER PLATING : 0.5μm MIN. Ni
 - CONTACT AREA : 0.1μm MIN. Au OVER 0.5μm MIN. Pd-Ni
 - SOLDER TAIL : 2.5μm MIN. Sn-Pb
- DIM "L"

4.25±0.1	3.5±0.1	5.0±0.1
OTHERS	36.67	117.34
		351.68
- DIM 0.15±0.1 SHOULD BE 0.1±0.1 (LOWER DECK) AND 0.1±0.1 (UPPER DECK) AFTER ASSEMBLING WITH YOUR PUSH OR SLIDE BUTTON.
- GENERAL TOLERANCE : ±0.3
- SEE SHEET 1 REGARDING COMPONENTS



SHEET INDEX		ISSUE	DATE		CUSTOMER COPY	
SH NO.		SH NO.	DATE	DATE	SCALE	SIZE
			9/13/95	9/13/95	2/1	C
TOLERANCES UNLESS OTHERWISE SPECIFIED		WAT	DR	CHK	APP'D	UNIT
SEE NOTE ④			J. Omoto	M. Kojima		
SEE NOTE ⑤						
LINEAR						
ANGLES						

BERG
ELECTRONICS

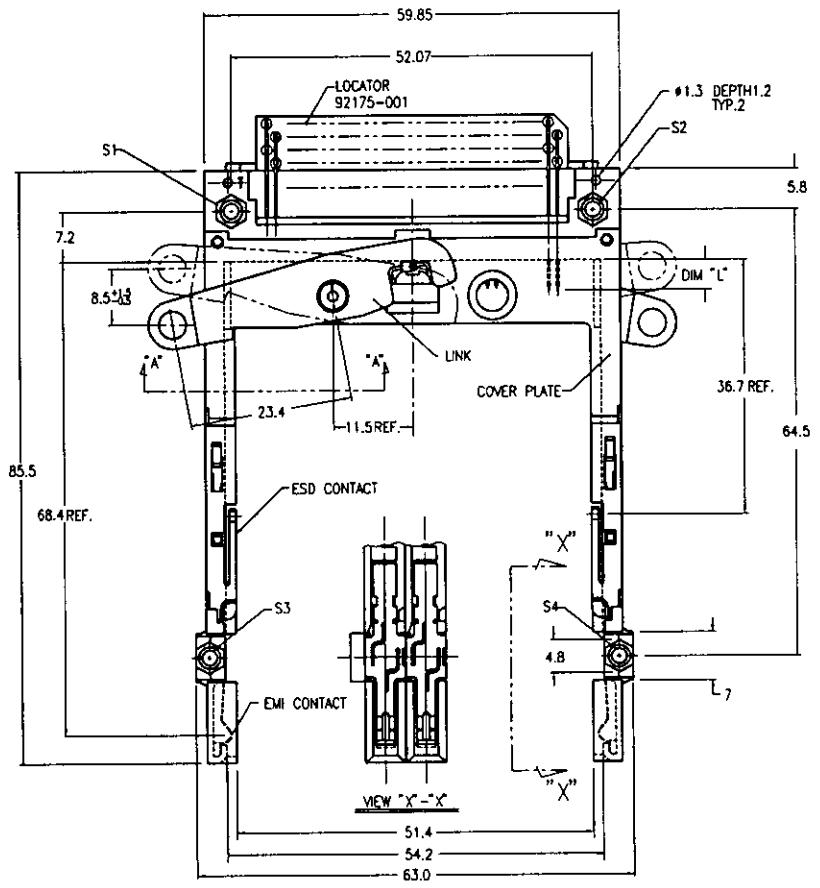
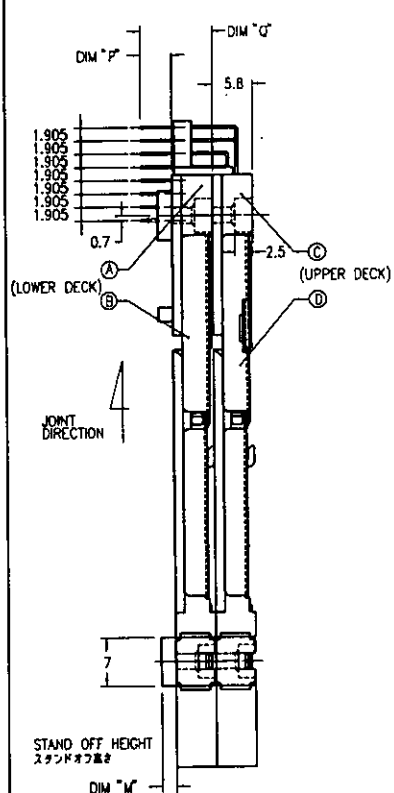
TITLE: 68P DOUBLE EJECTOR TYPE I / II / III
NON-PUSH ROD

SCALE: 2/1
SIZE: C
DWG. NO.: 92788
REV: C
SHEET: 2 of

DO NOT SCALE PRINT THIS INFORMATION IS CONFIDENTIAL AND IS DISCLOSED TO YOU ON CONDITION THAT NO FURTHER DISCLOSURE IS MADE BY YOU TO OTHER THAN BERG PERSONNEL WITHOUT WRITTEN AUTHORIZATION FROM BERG ELECTRONICS JAPAN INC.

PRODUCT NO.
92788-100
92788-120

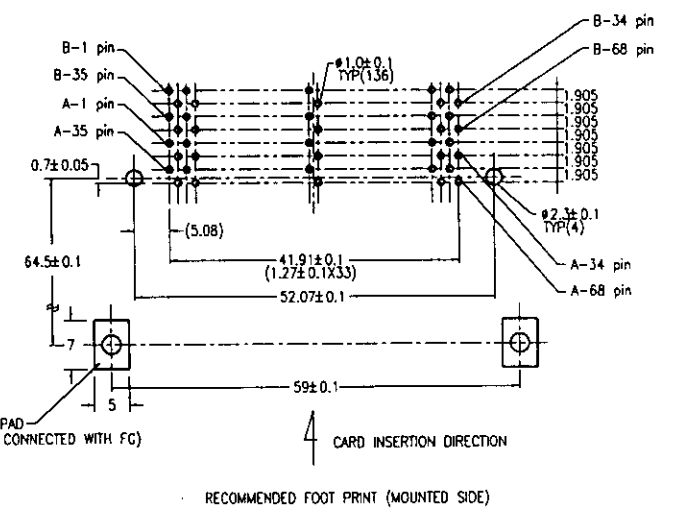
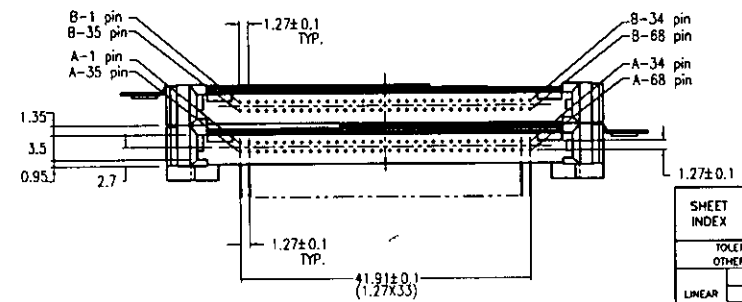
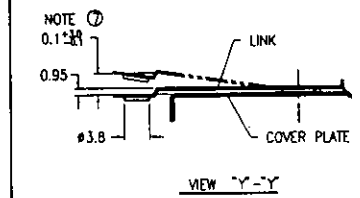
REVISIONS				
REV	DESCRIPTION	ECN	BY	DATE
A	RELEASED	J50023	N.T.	1/14/93
B	REVISED	J50086	M.K.	6/2/95



NOTE
 1. EJECT FORCE 3.5kg MAX.
 2. ASSY PROCESS
 2.1 TO MOUNT PART ②, ③ ON PWB WITH SCREW (S1,S2) AND SOLDER.
 2.2 TO JOINT PART ④, ⑤ INTO PART ②, ③ THEN FIX PART ④, ⑤ WITH 2 SCREWS (S3,S4).
 3. EJECT TRAVEL 8.0mm
 ④ MATERIAL
 4.1 PART ②, ③ (HEADER ASSY)
 HOUSING : LCP UL94V-0 BLACK
 LOCATOR : G.F. 6.6 NYLON UL94V-0 BLACK
 PIN : PHOSPHOR BRONZE
 4.2 PART ④, ⑤ (EJECT MECHANISM ASSY)
 GUIDE : POLYPHTHARAMID UL94V-0 BLACK
 PLATE : STAINLESS
 EMI CONTACT : PHOSPHOR BRONZE
 ⑥ FINISH (PIN)
 UNDER PLATING : 0.5 μm MIN. Ni
 CONTACT AREA : 0.1 μm MIN. Au OVER 0.5 μm MIN. Pd-Ni
 SOLDER TAIL : 2.5 μm MIN. Sn-Pb
 6. DIM "L"

4.25±0.1	3.5±0.1	5.0±0.1
OTHERS	36.67	33.5±0.1

 ⑦ DIM 0.1±0.05 SHOULD BE 0.1±0.1 (LOWER DECK) AND 0.1±0.1 (UPPER DECK) AFTER ASSEMBLING WITH YOUR PUSH OR SLIDE BUTTON.
 8. GENERAL TOLERANCE : ±0.3
 9. SEE SHEET 1 REGARDING COMPONENTS



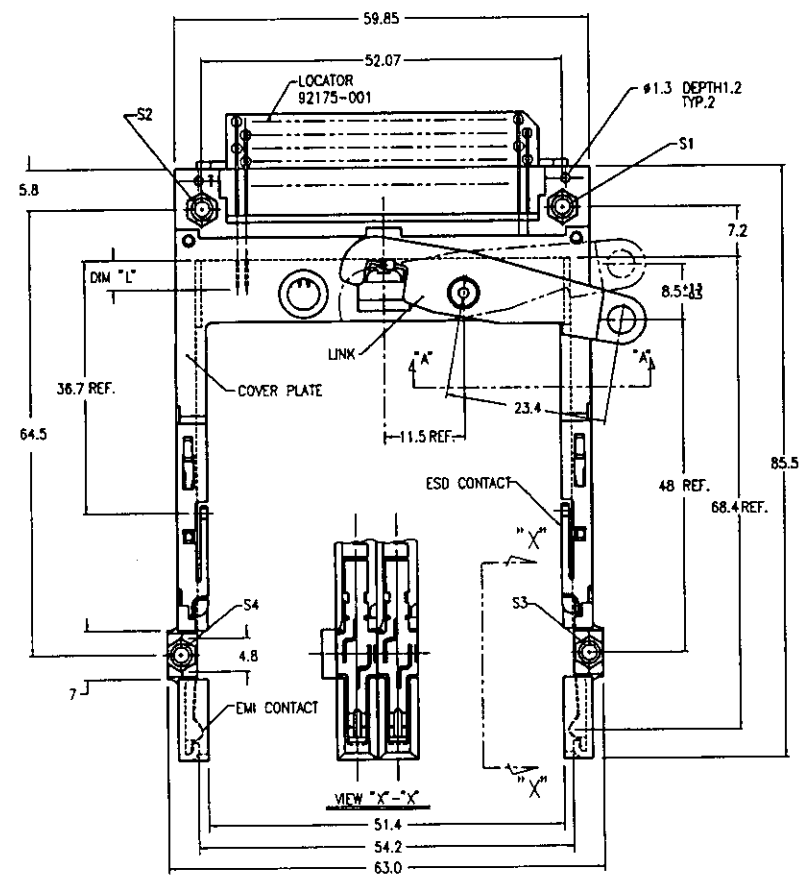
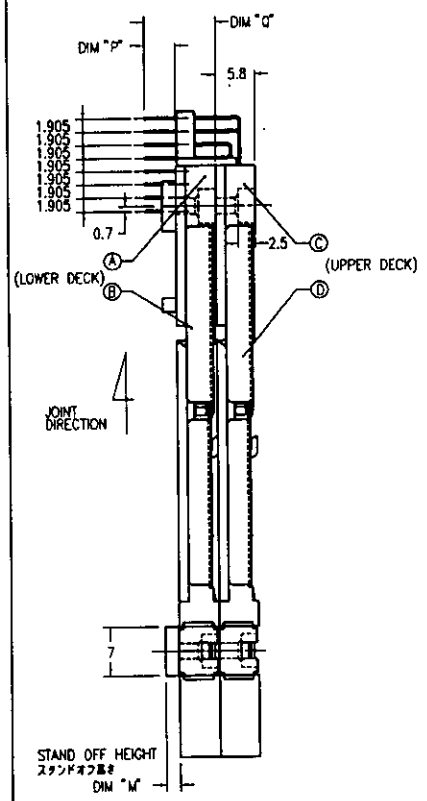
DO NOT SCALE PRINTED INFORMATION IS CONSIDERED VALID AND IS OBSOLETE IN YOU OR COMPANY THAT NO FURTHER DEVELOPMENT IS MADE BY YOU OR OTHER THAN BEING PERMITTED, WITHOUT WRITTEN AUTHORIZATION FROM BERG ELECTRONICS JAPAN INC.

SHEET INDEX	ISSUE SH. NO.	MAT.	DR.	DATE	CUSTOMER COPY
			S. Omoto	8/2/95	
		SEE NOTE ④	M. Kojima	8/2/95	
		SEE NOTE ⑤			

BERG ELECTRONICS
 68P DOUBLE EJECTOR TYPE I / I / I
 NON-PUSH ROD
 SCALE: SIZE DWG. NO. REV SHEET
 2/1 C 92788 B 3or

PRODUCT NO.
92788-200
92788-220

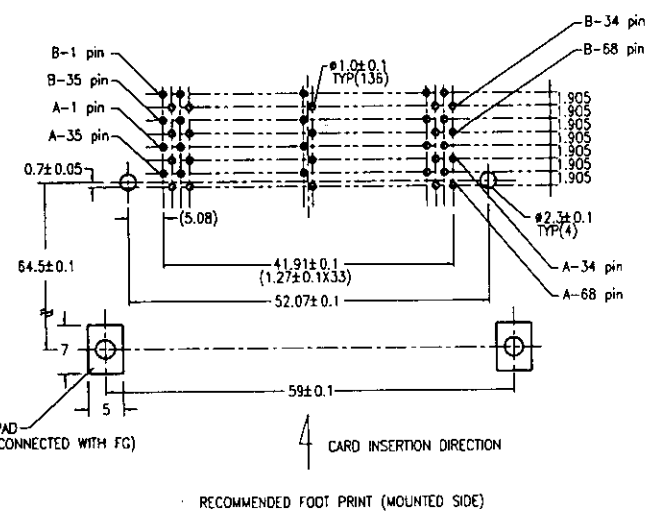
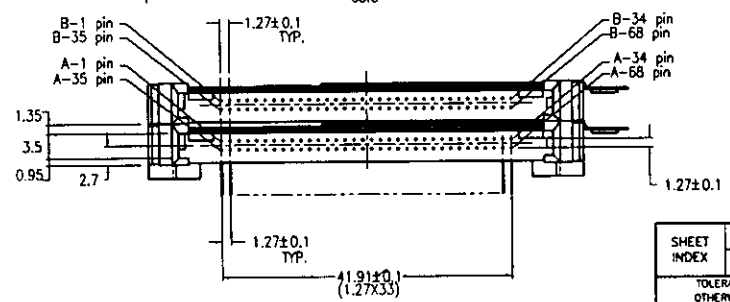
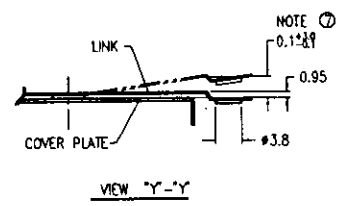
REVISIONS				
REV	DESCRIPTION	ECN	BY	DATE
A	RELEASED	430044	N.T	1/14/93
B	REVISED	450086	M.K	6/2/98



NOTE
 1. EJECT FORCE 3.5kg MAX.
 2. ASSY PROCESS
 2.1 TO MOUNT PART ②, ③ ON PWB WITH SCREW (S1,S2) AND SOLDER.
 2.2 TO JOINT PART ④, ⑤ INTO PART ②, ③ THEN FIX PART ②, ③ WITH 2 SCREWS (S3,S4).
 3. EJECT TRAVEL 8.0mm
 ④ MATERIAL
 4.1 PART ②, ③ (HEADER ASSY)
 HOUSING : LCP UL94V-0 BLACK
 LOCATOR : G.F. 6.6 NYLON UL94V-0 BLACK
 PIN : PHOSPHOR BRONZE
 4.2 PART ④, ⑤ (EJECT MECHANISM ASSY)
 GUIDE : POLYPHTHARAMID UL94V-0 BLACK
 PLATE : STAINLESS
 EMI CONTACT : PHOSPHOR BRONZE
 ⑤ FINISH (PIN)
 UNDER PLATING : 0.5μm MIN. Ni
 CONTACT AREA : 0.1μm MIN. Au OVER 0.5μm MIN. Pd-Ni
 SOLDER TAIL : 2.5μm MIN. Sn-Pb
 6. DIM "L"

4.25±0.1	3.5±0.1	5.0±0.1
OTHERS	36.67	34.68

 ⑦ DIM 0.1±0.1 SHOULD BE 0.1±0.1 (LOWER DECK) AND 0.1±0.1 (UPPER DECK) AFTER ASSEMBLING WITH YOUR PUSH OR SLIDE BUTTON.
 8. GENERAL TOLERANCE : ±0.3
 9. SEE SHEET 1 REGARDING COMPONENTS



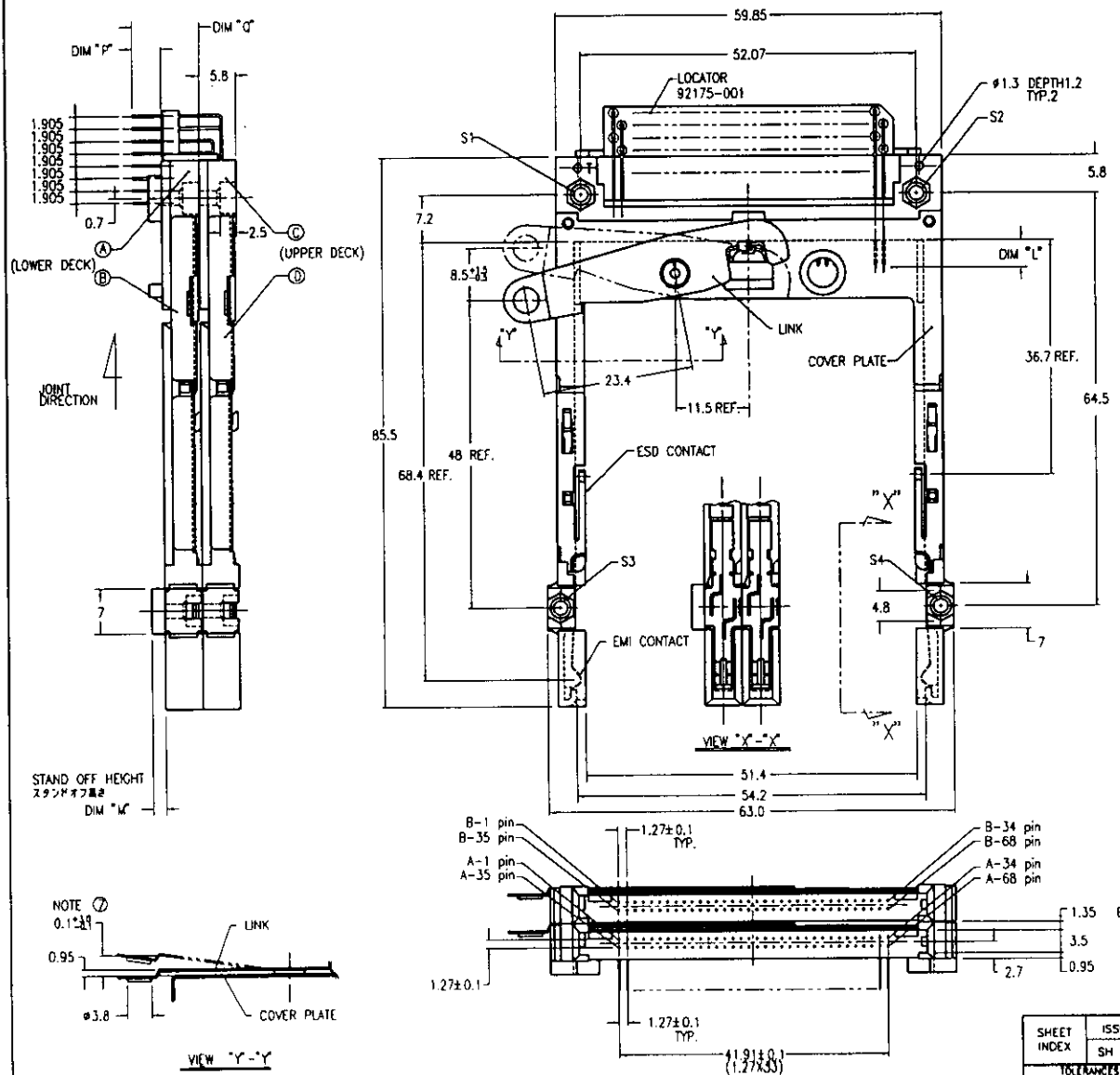
SHEET INDEX	ISSUE	SH NO.	MAT	DR	DATE	CUSTOMER COPY	TITLE	SCALE	SIZE	DWG. NO.	REV	SHEET
				S. Omata	6/2/99		68P DOUBLE EJECTOR TYPE 1/1/1	2/1	C	92788	B	4 of
LINEAR	TOLERANCES UNLESS OTHERWISE SPECIFIED	SEE NOTE ④	ENGR	M. Kojima	6/2/99	THIS ANGLE PERS	NON-PUSH ROD					
ANGLES		SEE NOTE ⑤	CHK	K. Sugita	7/13/99	UNIT						

BERG
ELECTRONICS

DO NOT SCALE PRINT THIS INFORMATION IS CONFIDENTIAL AND IS DISCLOSED TO YOU ON CONDITION THAT NO FURTHER DISCLOSURE IS MADE BY YOU TO OTHER THAN BERG PERSONNEL WITHOUT WRITTEN AUTHORIZATION FROM BERG ELECTRONICS JAPAN K.K.

PRODUCT NO.
92788-300
92788-320

REVISIONS				
REV	DESCRIPTION	ECN	BY	DATE
A	RELEASED	U30044	N.T.	1/14/79
B	REVISED	U50086	M.K.	4/2/79



NOTE

- EJECT FORCE 3.5kg MAX.
- ASSY PROCESS
 2.1 TO MOUNT PART ②, ③ ON PWB WITH SCREW (S1,S2) AND SOLDER.
 2.2 TO JOINT PART ④, ⑤ INTO PART ②, ③ THEN FIX PART ②, ③ WITH 2 SCREWS (S3,S4).
- EJECT TRAVEL 8.0mm

① MATERIAL

- PART ②, ③ (HEADER ASSY)
 HOUSING : LCP UL94V-0 BLACK
 LOCATOR : G.F. 6.8 NYLON UL94V-0 BLACK
 PIN : PHOSPHOR BRONZE
- PART ④, ⑤ (EJECT MECHANISM ASSY)
 GUIDE : POLYPHTHARAMID UL94V-0 BLACK
 PLATE : STAINLESS
 EMI CONTACT : PHOSPHOR BRONZE

⑥ FINISH (PIN)

UNDER PLATING : 0.5 μm MIN. Ni
 CONTACT AREA : 0.1 μm MIN. Au OVER 0.5 μm MIN. Pd-Ni
 SOLDER TAIL : 2.5 μm MIN. Sn-Pb

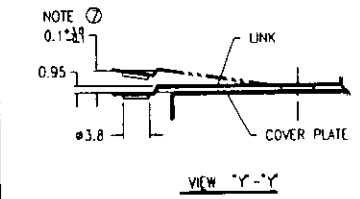
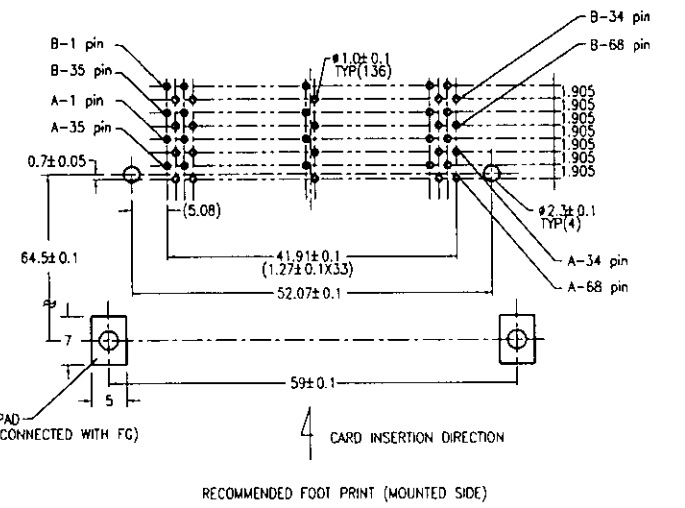
6. DIM "L"

4.25±0.1	3.5±0.1	5.0±0.1
OTHERS	36.67	34.16

⑦ DIM 0.1±0.09 SHOULD BE 0.1±0.1 (LOWER DECK) AND 0.1±0.1 (UPPER DECK) AFTER ASSEMBLING WITH YOUR PUSH OR SLIDE BUTTON.

8. GENERAL TOLERANCE : ±0.3

9. SEE SHEET 1 REGARDING COMPONENTS



SHEET INDEX	ISSUE	MAT	DR	DATE	CUSTOMER COPY
	SH. NO.		<i>S. Onoda</i>	1/27/79	
TOLERANCES UNLESS OTHERWISE SPECIFIED		SEE NOTE ①	<i>A. Kajiwara</i>	1/27/79	
LINEAR		TYPICAL	<i>S. Onoda</i>	1/27/79	
ANGLES		SEE NOTE ②	<i>S. Onoda</i>	1/27/79	

BERG
ELECTRONICS

8BP DOUBLE EJECTOR TYPE I / II / III
NON-PUSH ROD

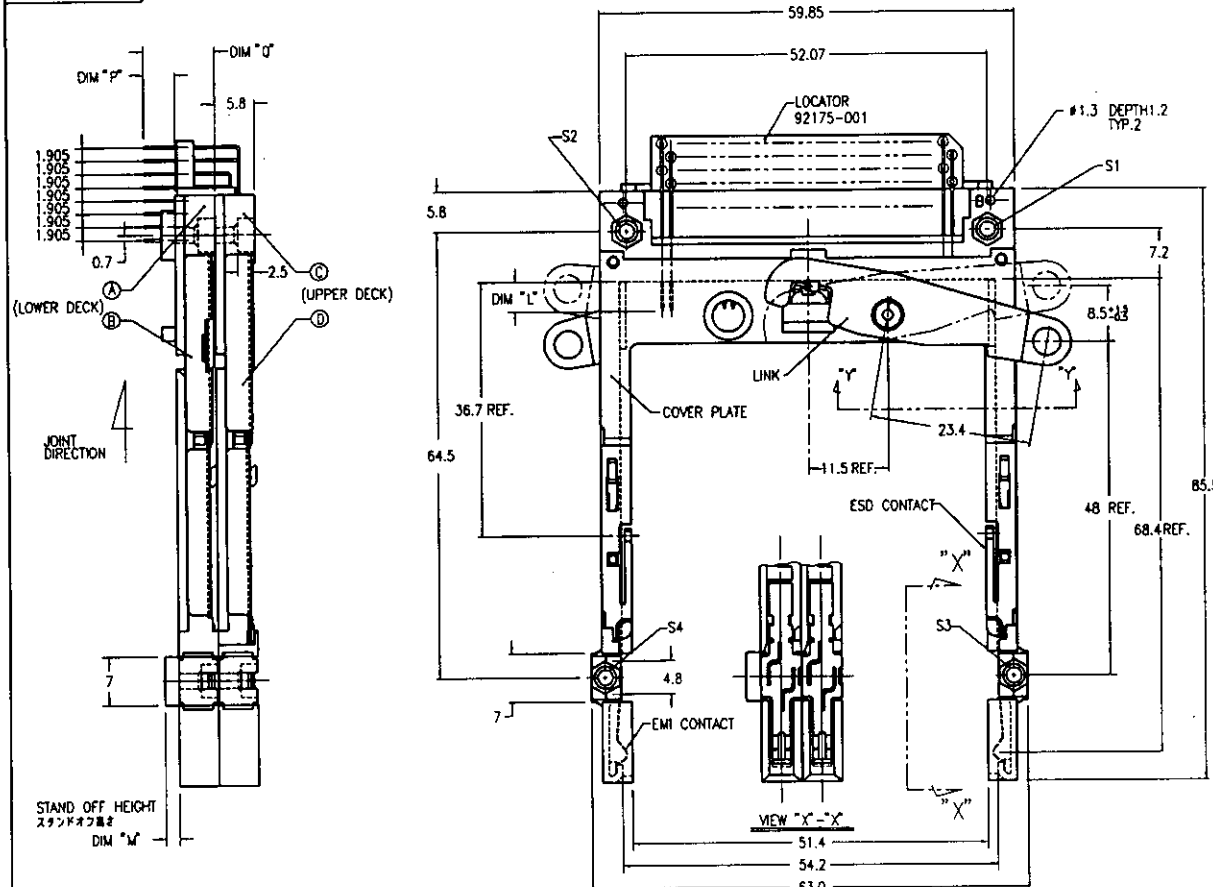
SCALE: 2/1 UNIT: mm

92788 B 5 of 8

DO NOT SCALE PRINT THIS INFORMATION IS CONFIDENTIAL AND IS CONSIDERED TO YOU ON CONDITION THAT NO FURTHER DISCLOSURE IS MADE BY YOU TO OTHER THAN BERG PERSONNEL WITHOUT WRITTEN AUTHORIZATION FROM BERG ELECTRONICS JAPAN INC.

PRODUCT NO.
92788-500
92788-520

REVISIONS				
REV	DESCRIPTION	ECN	BY	DATE
A	RELEASED	J30023	N.T	11/18/93
B	REVISED	J50088	M.KI	6/2/96

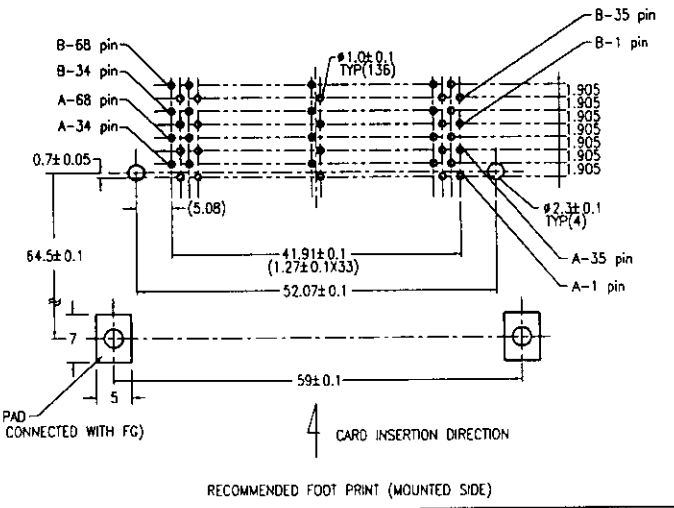
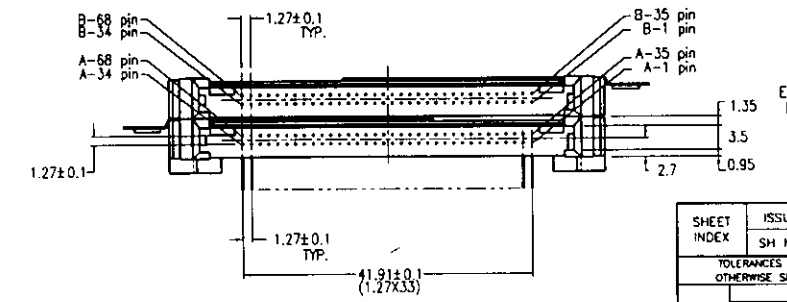
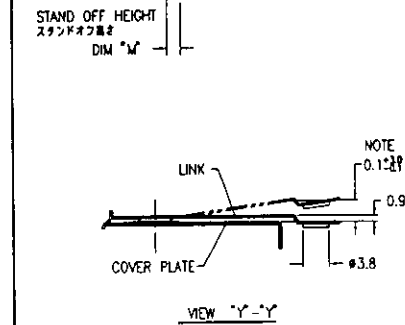


NOTE

NOTE

- EJECT FORCE 3.5Kg MAX.
- ASSY PROCESS
 - TO MOUNT PART ①, ② ON PWB WITH SCREW (S1,S2) AND SOLDER.
 - TO JOINT PART ③, ④ INTO PART ⑤, ⑥ THEN FIX PART ⑦, ⑧ WITH 2 SCREWS (S3,S4).
- EJECT TRAVEL 8.0mm
- MATERIAL
 - PART ①, ② (HEADER ASSY)
 - HOUSING : LCP UL94V-0 NATURAL
 - LOCATOR : G.F. 6.6 NYLON UL94V-0 BLACK
 - PIN : PHOSPHOR BRONZE
 - PART ③, ④ (EJECT MECHANISM ASSY)
 - GUIDE : POLYPHTHARAMID UL94V-0 BLACK
 - PLATE : STAINLESS
 - EMI CONTACT : PHOSPHOR BRONZE
- FINISH (PIN)
 - UNDER PLATING : 0.5 μm MIN. Ni
 - CONTACT AREA : 0.1 μm MIN. Au OVER 0.5 μm MIN. Pd-Ni
 - SOLDER TAIL : 2.5 μm MIN. Sn-Pb
- DIM "L"

4.25±0.1	3.5±0.1	5.0±0.1
OTHERS	36.67	38.168
- DIM 0.1±0.1 SHOULD BE 0.1±0.1 (LOWER DECK) AND 0.1±0.1 (UPPER DECK) AFTER ASSEMBLING WITH YOUR PUSH OR SLIDE BUTTON.
- GENERAL TOLERANCE : ±0.3
- SEE SHEET 1 REGARDING COMPONENTS

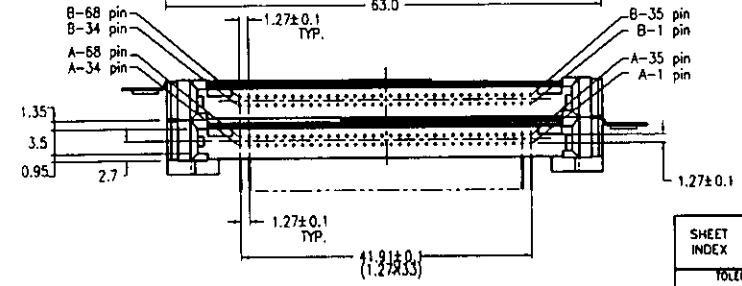
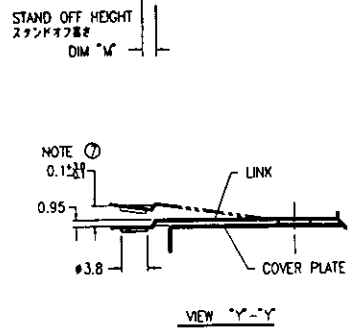
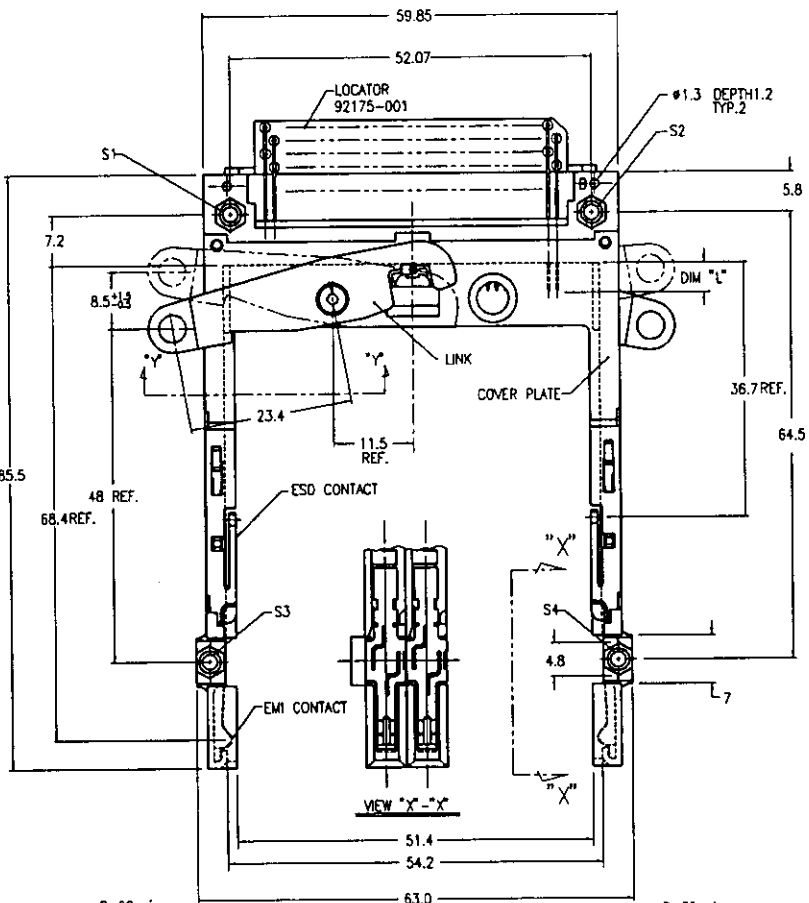
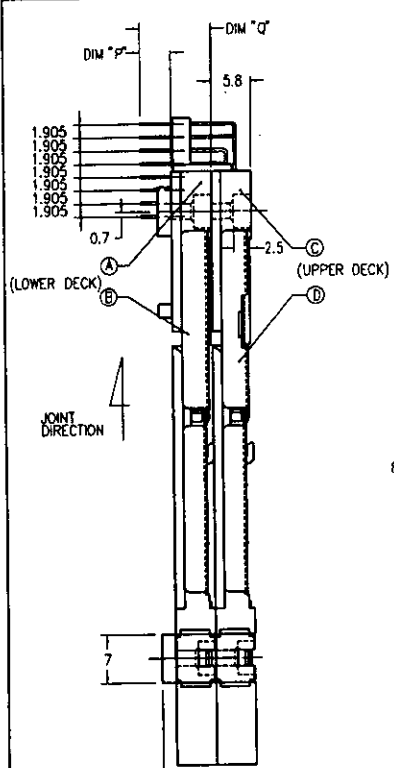


DF-003A REV. C
DO NOT SCALE PRINT THIS INFORMATION IS CONFIDENTIAL AND IS DISCLOSED TO YOU ON CONDITION THAT NO FURTHER DISCLOSURE IS MADE BY YOU TO OTHER THAN BERG PERSONNEL WITHOUT WRITTEN AUTHORIZATION FROM BERG ELECTRONICS JAPAN INC.

SHEET INDEX	ISSUE	MAT	DR	DATE	CUSTOMER COPY	TITLE	SCALE	SIZE	DWG. NO.	REV	SHEET
	SH. NO.		9. Omata	8/2/95		58P DOUBLE EJECTOR TYPE 1/1/1	2/1	C	92788	B	60F
TOLERANCES UNLESS OTHERWISE SPECIFIED		SEE NOTE ④	ENGR	M. Kojima	8/2/95	NON-PUSH ROD					
LINEAR		SEE NOTE ⑤	CHK		9/13/95						
ANGLES			APPV		9/13/95						

PRODUCT NO.
92788-600
92788-620

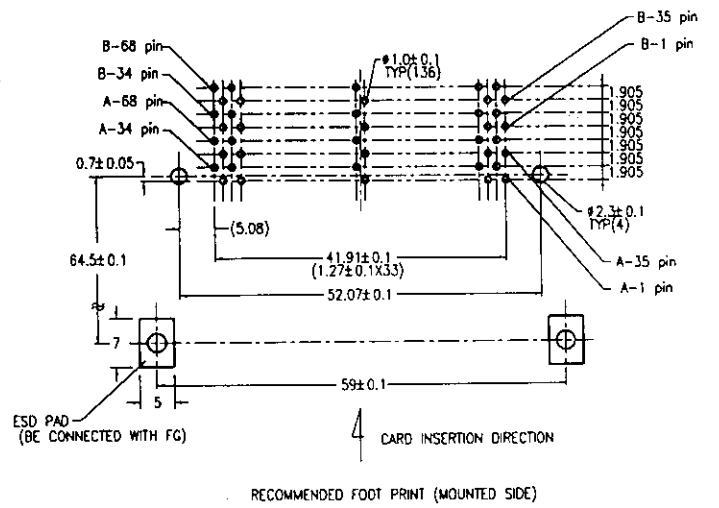
REVISIONS				
REV	DESCRIPTION	ECN	BY	DATE
A	RELEASED	J30044	N.T.	1/14/79
B	REVISED	J50086	M.K.	6/7/79



NOTE

- EJECT FORCE 3.5Kg MAX.
- ASSY PROCESS
 - TO MOUNT PART ④ ON PWB WITH SCREW (S1,S2) AND SOLDER.
 - TO JOINT PART ⑤, ⑥ INTO PART ④, ⑦ THEN FIX PART ⑤, ⑥ WITH 2 SCREWS (S3,S4).
- EJECT TRAVEL 8.0mm
- MATERIAL
 - PART ④ (HEADER ASSY)
 - HOUSING : LCP UL94V-0 NATURAL
 - LOCATOR : G.F. 6.6 NYLON UL94V-0 BLACK
 - PIN : PHOSPHOR BRONZE
 - PART ⑤, ⑥ (EJECT MECHANISM ASSY)
 - GUIDE : POLYPHTHARAMID UL94V-0 BLACK
 - PLATE : STAINLESS
 - EMI CONTACT : PHOSPHOR BRONZE
- FINISH (PIN)
 - UNDER PLATING : 0.5 μm MIN. Ni
 - CONTACT AREA : 0.1 μm MIN. Au OVER 0.5 μm MIN. Pd-Ni
 - SOLDER TAIL : 2.5 μm MIN. Sn-Pb
- DIM "L"

4.25±0.1	3.5±0.1	5.0±0.1
OTHERS	36.87	33.10R
- DIM 0.125 SHOULD BE 0.1±0.1 (LOWER DECK) AND 0.1±0.1 (UPPER DECK) AFTER ASSEMBLING WITH YOUR PUSH OR SLIDE BUTTON.
- GENERAL TOLERANCE : ±0.3
- SEE SHEET 1 REGARDING COMPONENTS



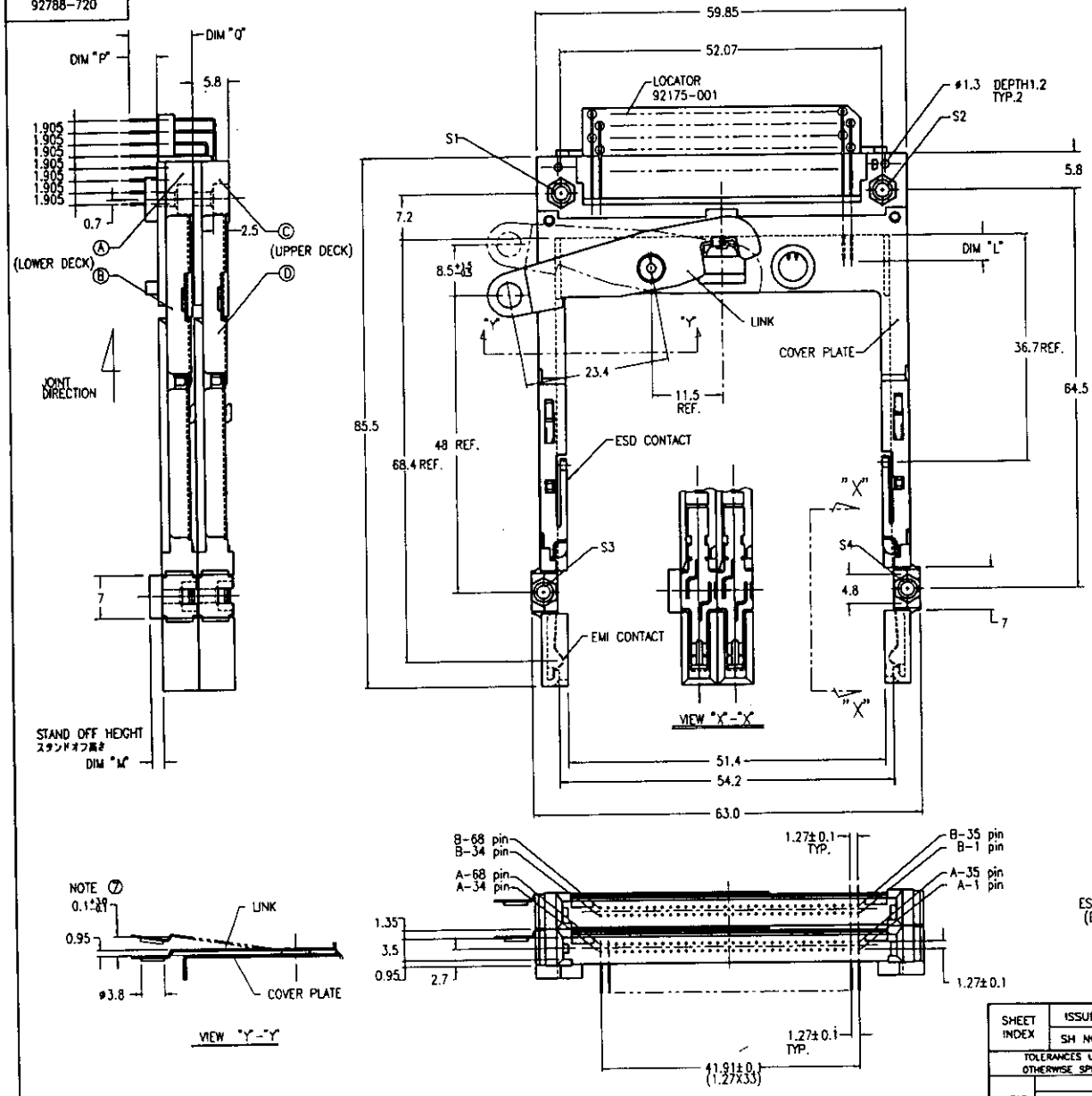
DO NOT SCALE. PRINT THIS INFORMATION IS CONFIDENTIAL AND IS DISCLOSED TO YOU ON CONDITION THAT NO FURTHER DISCLOSURE IS MADE BY YOU TO OTHER THAN BERG PERSONNEL WITHOUT WRITTEN AUTHORIZATION FROM BERG ELECTRONICS (JAPAN) INC.

SHEET INDEX	ISSUE SH. NO.	MAT	DR	DATE	CUSTOMER COPY
		SEE NOTE ①	S. Omachi	6/2/79	
		FINISH	H. Kajiwara	6/2/79	
		SEE NOTE ②	Y. Saito	11/17/79	

BERG ELECTRONICS	
TITLE: 68P DOUBLE EJECTOR TYPE I / I / III NON-PUSH ROD	
RELE. DATE: 2/1	DWG. NO.: C
REV. SHEET: B	7 of 7

PRODUCT NO.
92788-700
92788-720

REVISIONS				
REV	DESCRIPTION	ECN	BY	DATE
A	RELEASED	J30044	N.T.	1/14/93
B	REVISED	J50086	M.K.	4/2/95



NOTE

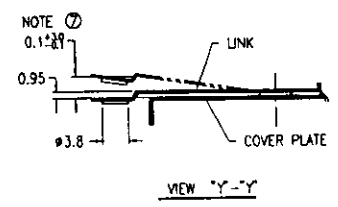
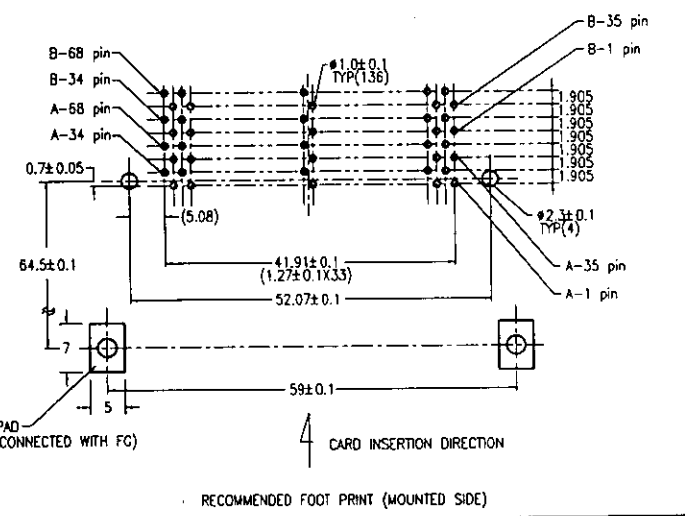
- EJECT FORCE 3.5kg MAX.
- ASSY PROCESS
 - TO MOUNT PART ②, ③ ON PWB WITH SCREW (S1,S2) AND SOLDER.
 - TO JOINT PART ④, ⑤ INTO PART ②, ③ THEN FIX PART ②, ③ WITH 2 SCREWS (S3,S4).
- EJECT TRAVEL 8.0mm
- MATERIAL
 - PART ②, ③ (HEADER ASSY)
 - HOUSING : LCP UL94V-0 NATURAL
 - LOCATOR : G.F. 6.6 NYLON UL94V-0 BLACK
 - PIN : PHOSPHOR BRONZE
 - PART ④, ⑤ (EJECT MECHANISM ASSY)
 - GUIDE : POLYPHTHAMID UL94V-0 BLACK
 - PLATE : STAINLESS
 - EMI CONTACT : PHOSPHOR BRONZE
- FINISH (PIN)
 - UNDER PLATING : 0.5μm MIN. Ni
 - CONTACT AREA : 0.1μm MIN. Au OVER 0.5μm MIN. Pd-Ni
 - SOLDER TAIL : 2.5μm MIN. Sn-Pb
- DIM "L"

4.25±0.1	3.5±0.1	5.0±0.1
OTHERS	36.67	36.51.00

⑦ DIM 0.1±0.1 SHOULD BE 0.1±0.1 (LOWER DECK) AND 0.1±0.1 (UPPER DECK) AFTER ASSEMBLING WITH YOUR PUSH OR SLIDE BUTTON.

8. GENERAL TOLERANCE : ±0.3

9. SEE SHEET 1 REGARDING COMPONENTS

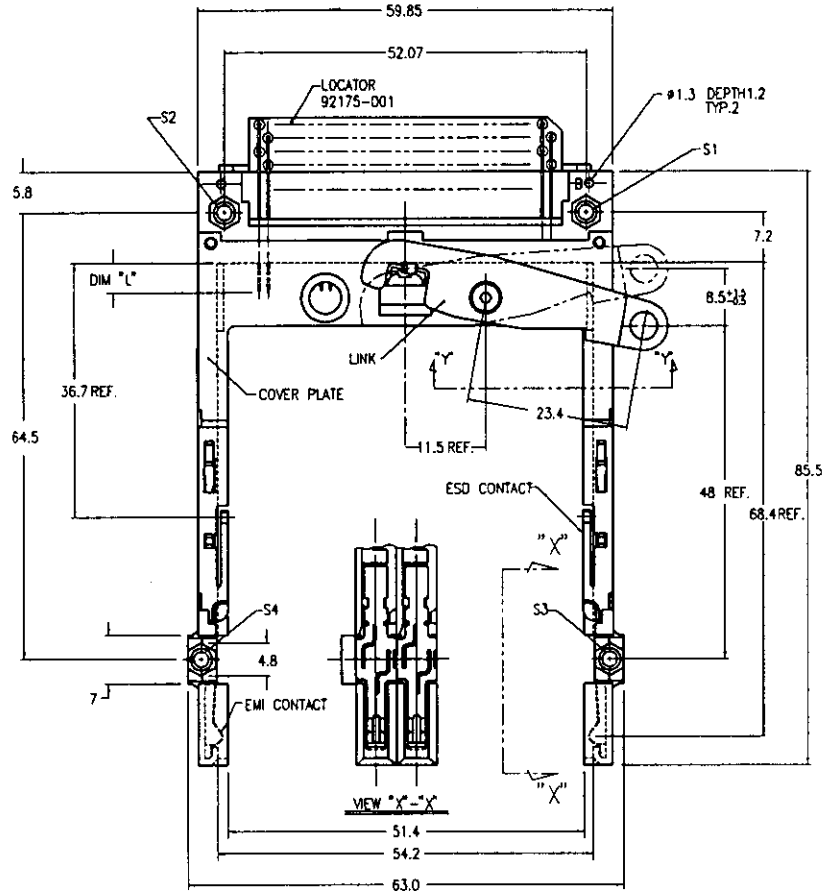
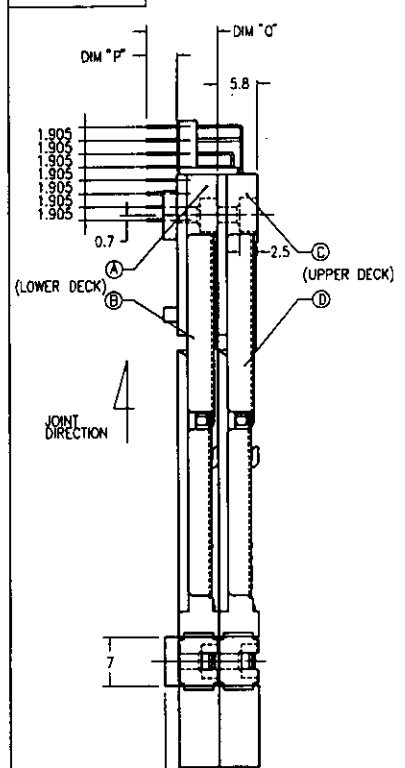


SHEET INDEX	ISSUE SH NO.	MAT	DR	DATE	CUSTOMER COPY	TITLE	SCALE	SIZE	DWG. NO.	REV	SHEET
			J. Omata	6/2/95		88P DOUBLE EJECTOR TYPE 1/I	2/1	C	92788	B	18 OF
TOLERANCES UNLESS OTHERWISE SPECIFIED		SEE NOTE ④	ENGR	6/2/95	CHK	NON-PUSH ROD					
LINEAR					APPRO						

DO NOT SCALE PRINT THIS INFORMATION IS CONFIDENTIAL AND IS DISCLOSED TO YOU ON CONDITION THAT NO FURTHER DISCLOSURE IS MADE BY YOU TO OTHER THAN BERG PERSONNEL WITHOUT WRITTEN AUTHORIZATION FROM BERG ELECTRONICS JAPAN INC.

PRODUCT NO.
92788-800
92788-820

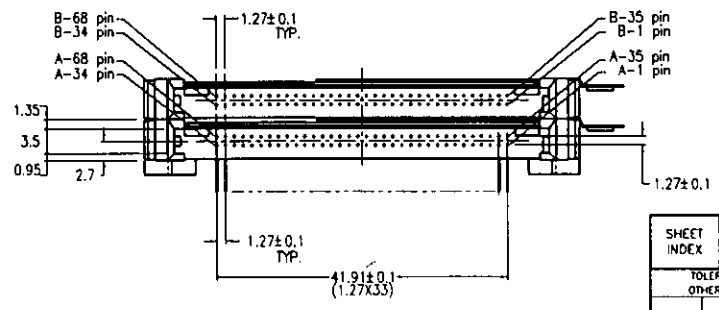
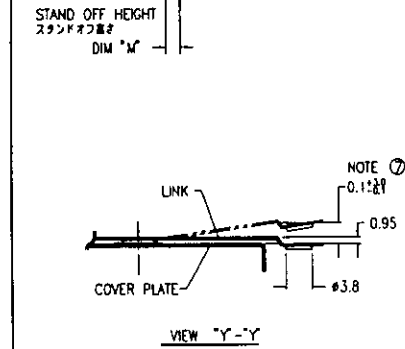
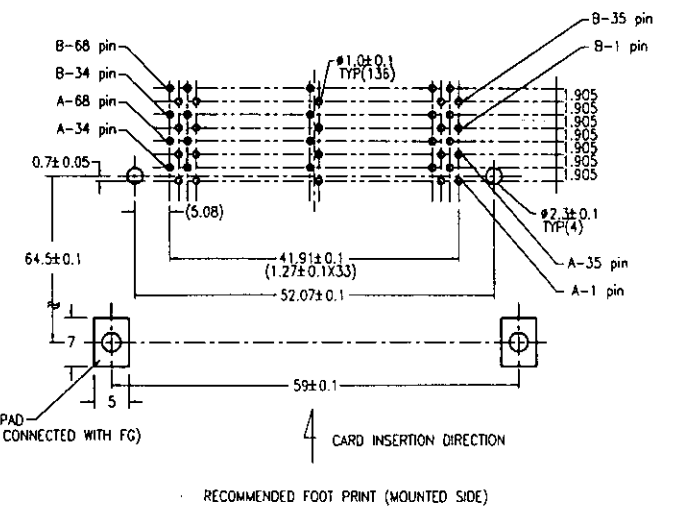
REVISIONS				
REV	DESCRIPTION	ECN	BY	DATE
A	RELEASED	J30044	N.T.	1/14/93
B	REVISED	J50086	M.K.	2/2/96



NOTE

- EJECT FORCE 3.5kg MAX.
- ASSY PROCESS
 - TO MOUNT PART ②, ③ ON PWB WITH SCREW (S1,S2) AND SOLDER.
 - TO JOINT PART ②, ③ INTO PART ①, ④ THEN FIX PART ②, ③ WITH 2 SCREWS (S3,S4).
- EJECT TRAVEL 8.0mm
- MATERIAL
 - PART ②, ③ (HEADER ASSY)
 - HOUSING : LCP UL94V-0 NATURAL
 - LOCATOR : G.F. 6.6 NYLON UL94V-0 BLACK
 - PIN : PHOSPHOR BRONZE
 - PART ②, ③ (EJECT MECHANISM ASSY)
 - GLIDE : POLYPHTHARAMID UL94V-0 BLACK
 - PLATE : STAINLESS
 - EMI CONTACT : PHOSPHOR BRONZE
- FINISH (PIN)
 - UNDER PLATING : 0.5 μm MIN. Ni
 - CONTACT AREA : 0.1 μm MIN. Au OVER 0.5 μm MIN. Pd-Ni
 - SOLDER TAIL : 2.5 μm MIN. Sn-Pb
- DIM "L"

4.25±0.1	3.5±0.1	5.0±0.1
OTHERS	36.67	35.18
- DIM 0.1±0.1 SHOULD BE 0.1±0.1 (LOWER DECK) AND 0.1±0.1 (UPPER DECK) AFTER ASSEMBLING WITH YOUR PUSH OR SLIDE BUTTON.
- GENERAL TOLERANCE : ±0.3
- SEE SHEET 1 REGARDING COMPONENTS



DR-0034 REV. C
 (DO NOT SCALE PRINT) THIS INFORMATION IS CONFIDENTIAL AND IS CONVEYED TO YOU ON THE UNDERSTANDING THAT NO FURTHER DEVELOPMENT IS MADE BY YOU OR OTHER THAN BERG PERSONNEL, WITHOUT WRITTEN AUTHORIZATION FROM BERG ELECTRONICS JAPAN INC.

SHEET INDEX	ISSUE	DATE		CUSTOMER COPY
	SH. NO.	5/2/93	5/2/93	
TOLERANCES UNLESS OTHERWISE SPECIFIED		MAF	DR	
		ENG	J. Omada	
		CHK	H. Kojima	
		APPD		
		DATE	9/1/97	
		DATE	9/1/97	
		UNIT	MM	
		SCALE	2/1	
		SIZE	C	
		DWG. NO.	92788	
		REV	B	9 of 9

BERG ELECTRONICS

TYPE 88P DOUBLE EJECTOR TYPE 1/1/1/1
 NON-PUSH ROD

SCALE: 2/1 SIZE: C DWG. NO.: 92788 REV: B 9 of 9